

# Besoon



吴先生: 13823955651



区先生: 13126285163

地址: 广东省中山市小榄镇高沙社区同乐大街一路80号

No.80 Tongle Street 1RD, Gaosha, Xiaolan Town, Zhongshan City, Guangdong Province, China

☎ 0760-22131348

✉ [info@bs-custommetal.com](mailto:info@bs-custommetal.com)

🌐 <http://www.bs-custommetal.com>

专家的选择  
Experts' Choice



## 柏顺五金

3D线材折弯成型 / 弹簧 / 五金冲压 / CNC数控加工  
Wire Bending / Spring / Metal Stamping / CNC

中山市柏顺五金制造有限公司

ZHONGSHAN BAISHUN HARDWARE MANUFACTURING CO., LTD.



Besoon

柏顺五金

企业简介  
Company Profile

## 精密之选 Experts' Choice

扎根“中国五金制品产业基地”——广东中山小榄镇，柏顺五金深耕精密制造领域20余年，是一家集研发、生产、销售于一体的现代化制造企业，凭借ISO9001国际质量体系认证与智能化生产管理体系，持续为全球客户提供高精度五金解决方案。

Located in the "China Hardware Products Industry Base" - Xiaolan Town, Zhongshan City, Guangdong Province, Baishun Hardware has been deeply involved in the field of precision manufacturing for more than 20 years. It is a modern manufacturing enterprise integrating R&D, production and sales. With ISO9001 international quality system certification and intelligent production management system, it continues to provide high-precision hardware solutions for customers worldwide.

## 核心优势 Advantages

- √ 智能化制造集群：配备3D线材成型机、电脑弹簧机、冲压生产线及CNC加工中心
- √ 行业领先实验室：弹簧扭转/拉压试验机、盐雾测试、精密硬度计等检测设备，确保产品通过行业标准及客户特殊要求验证
- √ 垂直整合能力：从模具设计、产品生产到表面处理的一站式服务
- √ Intelligent manufacturing: equipped with 3D wire forming machines, computer spring machines, stamping production lines and CNC machining centers
- √ Industry-leading laboratories: spring torsion/tension and compression testing machines, salt spray tests, precision hardness testers and other testing equipment to ensure that products pass industry standards and customer-specific requirements
- √ one-stop service: from mold design, production to surface treatment

## 专业领域 Professional fields

## ▶ 线材成型事业部

专注大线径产品智造，成熟应用于：

婴童用品：童车靠背支撑架/顶棚支撑杆/摇椅底盘结构件

智能照明：植物生长灯调节支架/工业灯具承重框架

户外装备：折叠家具关节件/帐篷支撑系统

## ▶ 弹簧技术中心

全品类弹簧定制开发：

高精度压缩弹簧

定制化扭力弹簧

恒力发条/拉伸弹簧/特殊用途弹簧

## ▶ 精密加工体系

冲压车间：弹片/锁具组件/精密华司、帽扣/定制五金冲压件

数控车间：铜、铝、不锈钢、易车铁等车削件

## 质量承诺 Quality commitment

我们践行“3M品质管理体系”（3M quality management system）：

**Material**（材料溯源） **Machining**（工艺控制） **Measurement**（检测标准）

“5S企业管理办法”（5S enterprise management method）：

**Seiri**（整理） **Seiton**（整顿） **Seiso**（清扫） **Seiketsu**（清洁） **Shitsuke**（素养）

## 合作共赢 Win-win cooperation

服务网络覆盖国内外。提供：

√ 图纸/样品快速打样

√ 小批量柔性生产

√ 专业问题解决方案

√ Fast proofing of drawings/samples

√ Small batch production

√ Professional solutions

诚邀全球合作伙伴莅临工厂考察，  
让我们共同打造更具竞争力的五金产品！

We sincerely invite global partners to visit the factory and let us work together to create more good & competitive hardware products!

# 生产场景 Production scenario



# 检测设备 Test Equipments



# 荣誉资质 Certificates



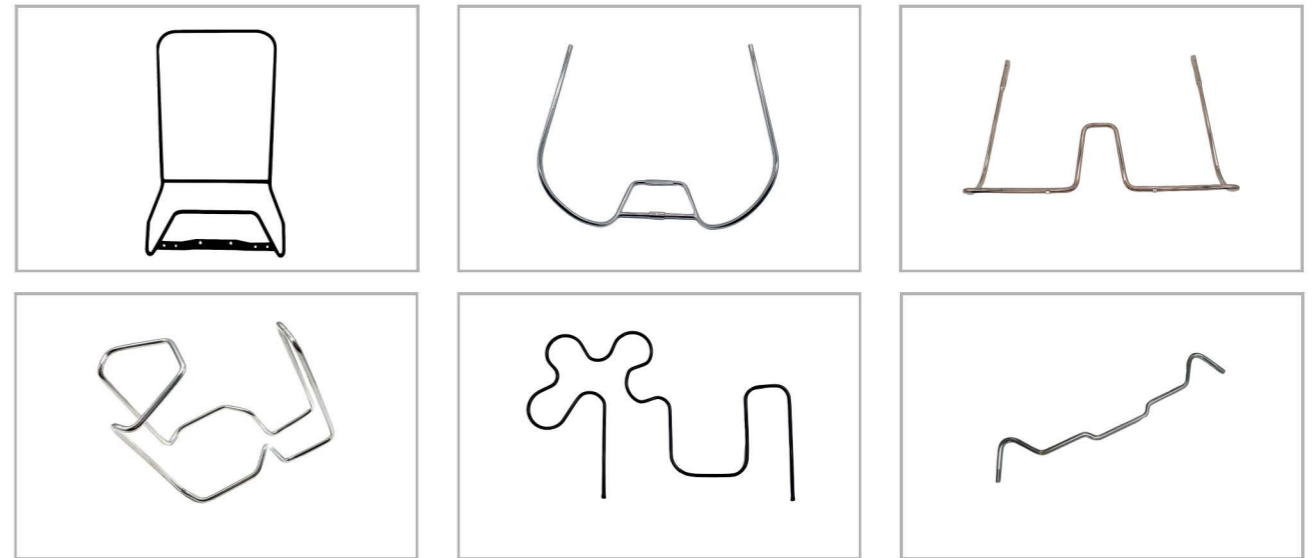


3D线成型数控折弯机是我公司根据客户需求专门订购的一款高精度、高效率的机型，本机在德国原有线材成型机的基础上加以改进，独特的送料机构加上高速的转线机构使得成型空间更广阔，生产速度更快，更容易做出一些形状比较复杂的三维钢丝骨架。

采用全进口高精度高速伺服电机，全进口减速机，稳定耐用，生产速度高于国内同行同类产品30%以上。电脑开机关机速度快、操作简单方便，支持多语言操作，电脑界面可以边生产、边调速、边改程序。生产程序可实现在不同速折角时角度无任何变化，生产稳定性更好。

轴承、导轨、齿轮等重要零部件采用进口配件，质量保证，设备耐用可靠。精密度高，可以做线径4-16mm范围内的线材成型产品，误差降到0.1mm。线成型制品可用于汽车配件、生活用品、五金用品、超市货架、仓储笼等行业。

## 线材成型 Wire Forming



The 3D wire forming CNC bending machine is a high-precision and high-efficiency model specially ordered by our company according to customer needs. It is improved on the basis of the original German machine. The unique feeding mechanism plus the high-speed wire turning mechanism make the forming space wider, the production speed faster, and it is easier to make some three-dimensional steel wire skeletons with more complex shapes.

It adopts high-precision high-speed imported servo motors and reducers, which are stable and durable. The production speed is more than 30% higher than similar products of domestic peers.

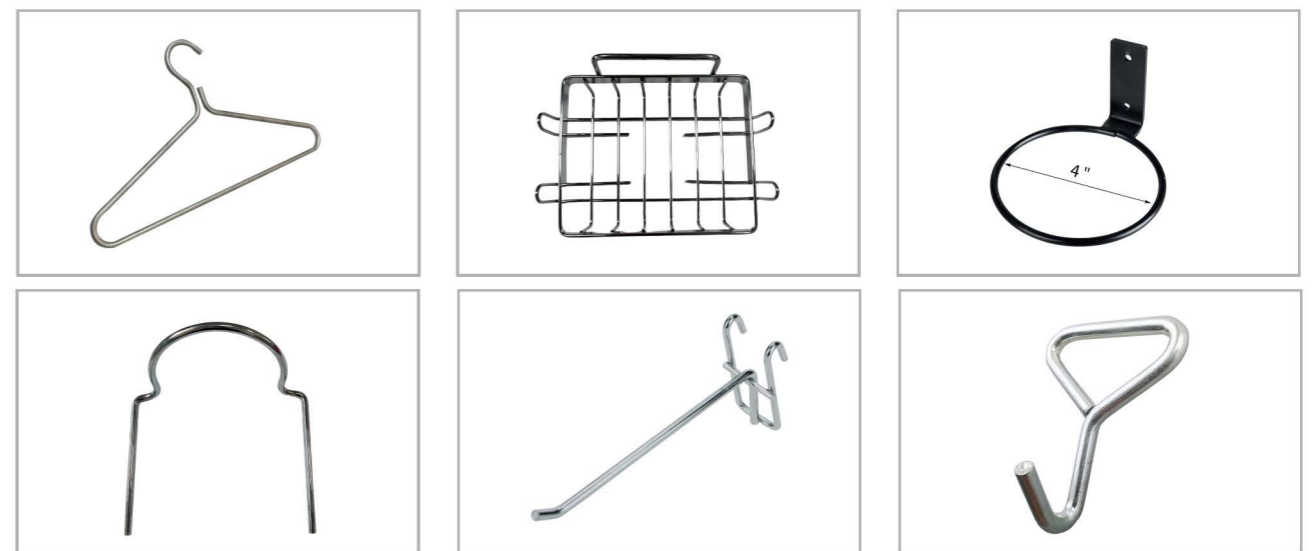
The computer has fast startup and shutdown speed, simple and convenient operation, supports multi-language, and it can produce, adjust speed, and change programs at the same time.

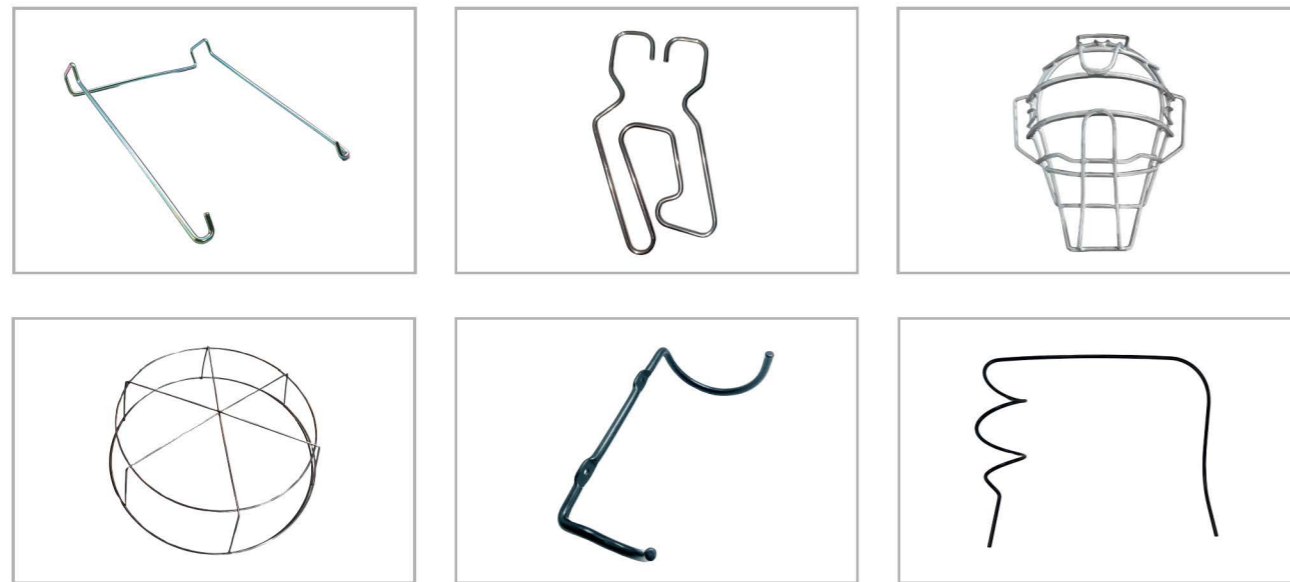
The production program can achieve no change in angle when bending at different speeds, and the production stability is better.

Important parts such as bearings, guide rails, gears, etc. use imported accessories, quality assurance, durable and reliable.

High precision, can make wire forming products with a wire diameter range of 4-16mm, and the error is reduced to 0.1mm.

Wire forming products can be used in automotive accessories, daily necessities, hardware supplies, supermarket shelves, storage cages and other industries.





## 弹簧系列 Spring Series

常见的弹簧类型有压缩弹簧、拉伸弹簧、扭转弹簧、恒力发条、波形弹簧和其他异形弹簧。他们形态各异、功能各不相同，广泛应用于各行各业，例如摩托车的减震避震、刹车的回位复位、安全带的自动回卷、门把手的转动、家用电器盖子的打开关闭、各种机械的零件等等。

Common spring types include compression springs, tension springs, torsion springs, constant force springs, wave springs and other special-shaped springs. They have different shapes and functions, widely used in various industries, such as shock absorption of motorcycles, return and reset of brakes, automatic rewinding of seat belts, rotation of door handles, opening and closing of household appliance lids, various mechanical parts, etc.

### 恒力, 涡卷弹簧 Constant Force Spring and Volute Spiral Spring



## 压簧 Compression Spring

避震弹簧是一种利用弹簧的弹性来吸收和缓冲冲击力的装置，广泛应用于汽车、家具、家电和运动器材等领域，以提升舒适性和保护设备。

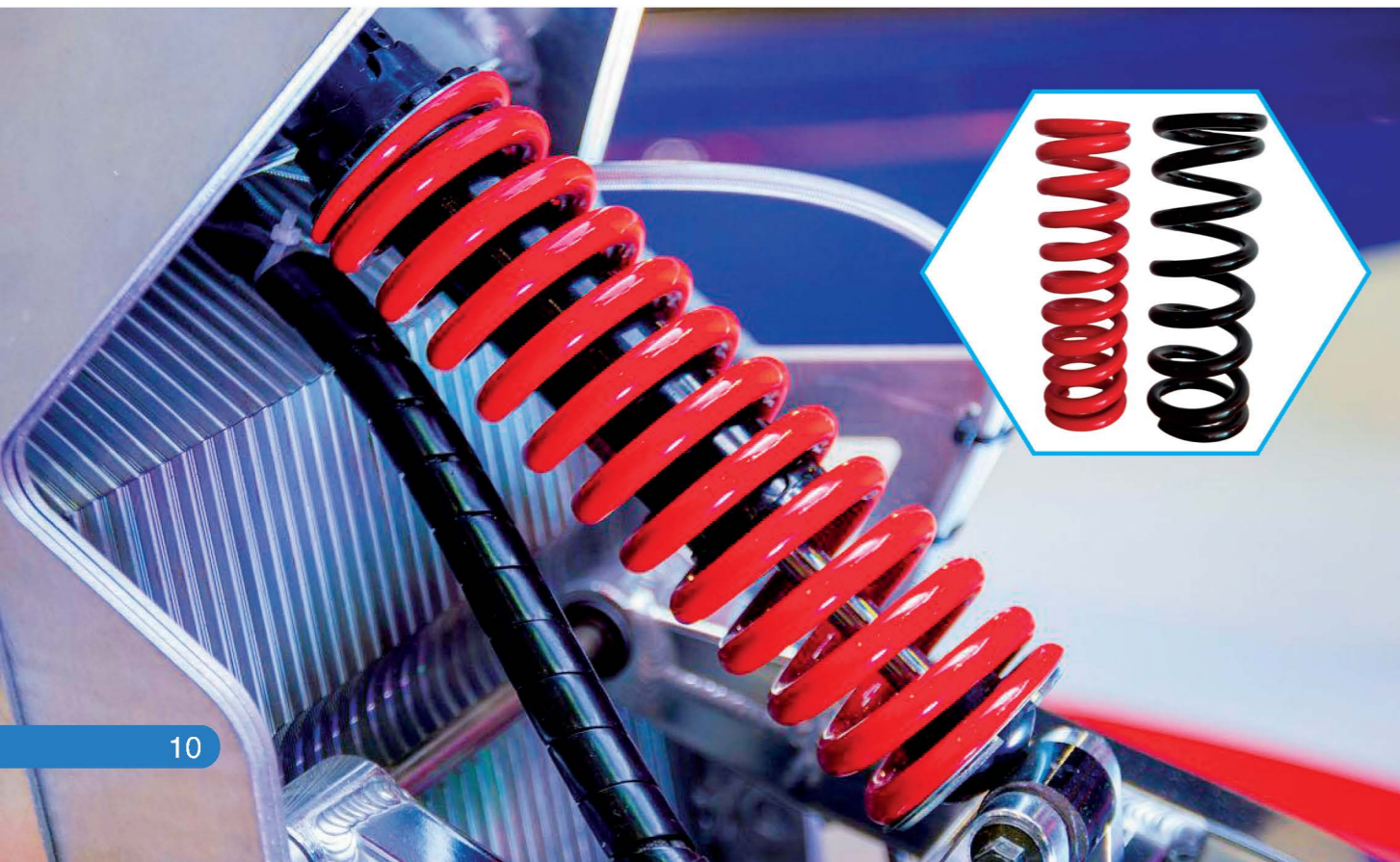
产品特点：

1. 高效减震：独特的弹簧和优质的材料，吸收并缓解机械系统中的震动和冲击。
2. 高适应性：可根据不同负载条件自动调整，适用于多种工业设备和汽车机械。
3. 耐用性强：优质材料和精细加工工艺，确保在长时间工作中保持高效性能，减少维修频率。
4. 定制化服务：可根据客户需求提供量身定制的配套方案，确保最佳减震效果与长期稳定性能。

Shock absorber springs are devices that use the elasticity of springs to absorb and buffer impact forces. They are widely used in automobiles, furniture, home appliances, and sports equipment to improve comfort and protect equipment.

Features:

1. Efficient shock absorption: unique springs and high-quality materials absorb and relieve vibration and shock in mechanical systems.
2. High adaptability: can automatically adjust according to different load conditions, suitable for a variety of industrial equipment and automotive machinery.
3. Strong durability: high-quality materials and fine processing technology ensure high performance during long-term work and reduce maintenance frequency.
4. Customized service: can provide customized supporting solutions according to customer needs to ensure the best shock absorption effect and long-term stable performance.

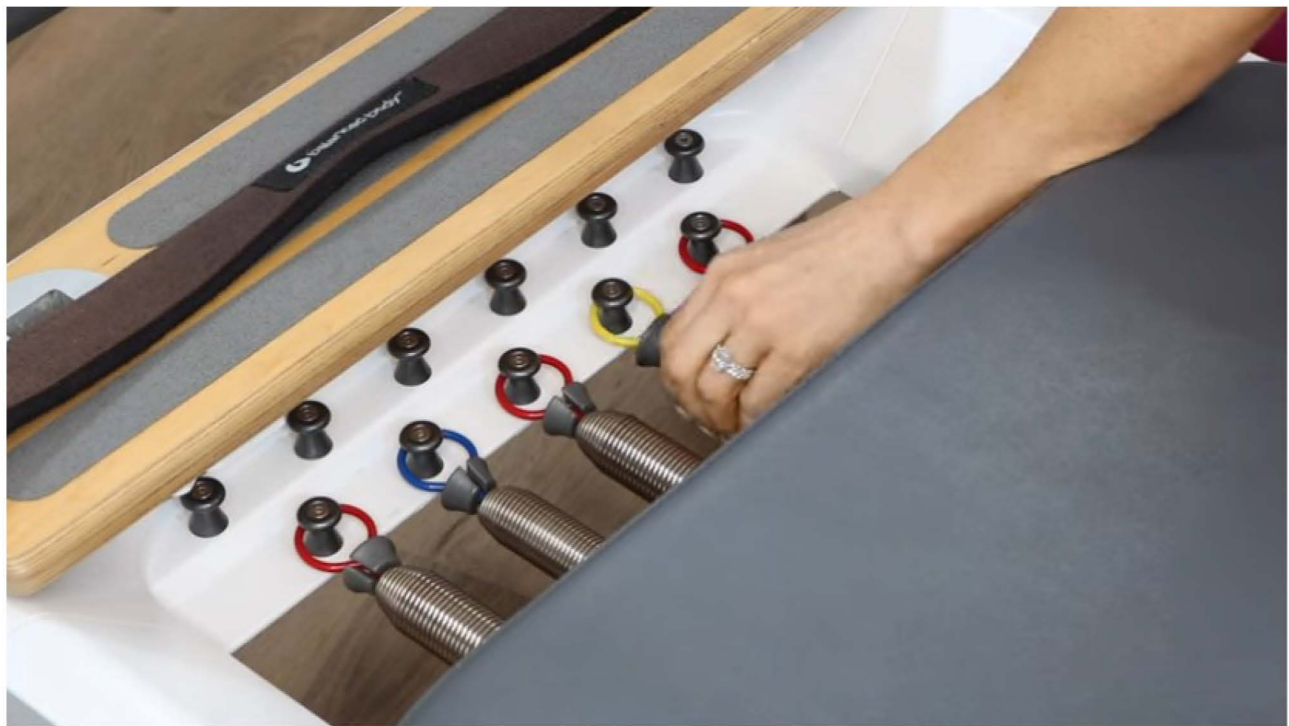


柏顺五金园林剪刀弹簧，采用优质弹簧钢材质精心打造。弹簧钢具有极高的弹性和韧性，即使在反复弯曲、拉伸的使用过程中，也能始终保持稳定的性能，不易变形、断裂。弹簧的表面还经过特殊处理，具有良好的防锈、耐腐蚀性能。即使在潮湿的园林环境中，也能长时间保持光亮如新，延长使用寿命。

Our Garden Pruner Spring is made of high-quality spring steel. Spring steel has extremely high elasticity and toughness. Even in the process of repeated bending and stretching, it can always maintain stable performance and is not easy to deform or break. The surface of the spring has also been specially treated to have good rust and corrosion resistance. Even in a humid garden environment, it can keep bright and new for a long time.



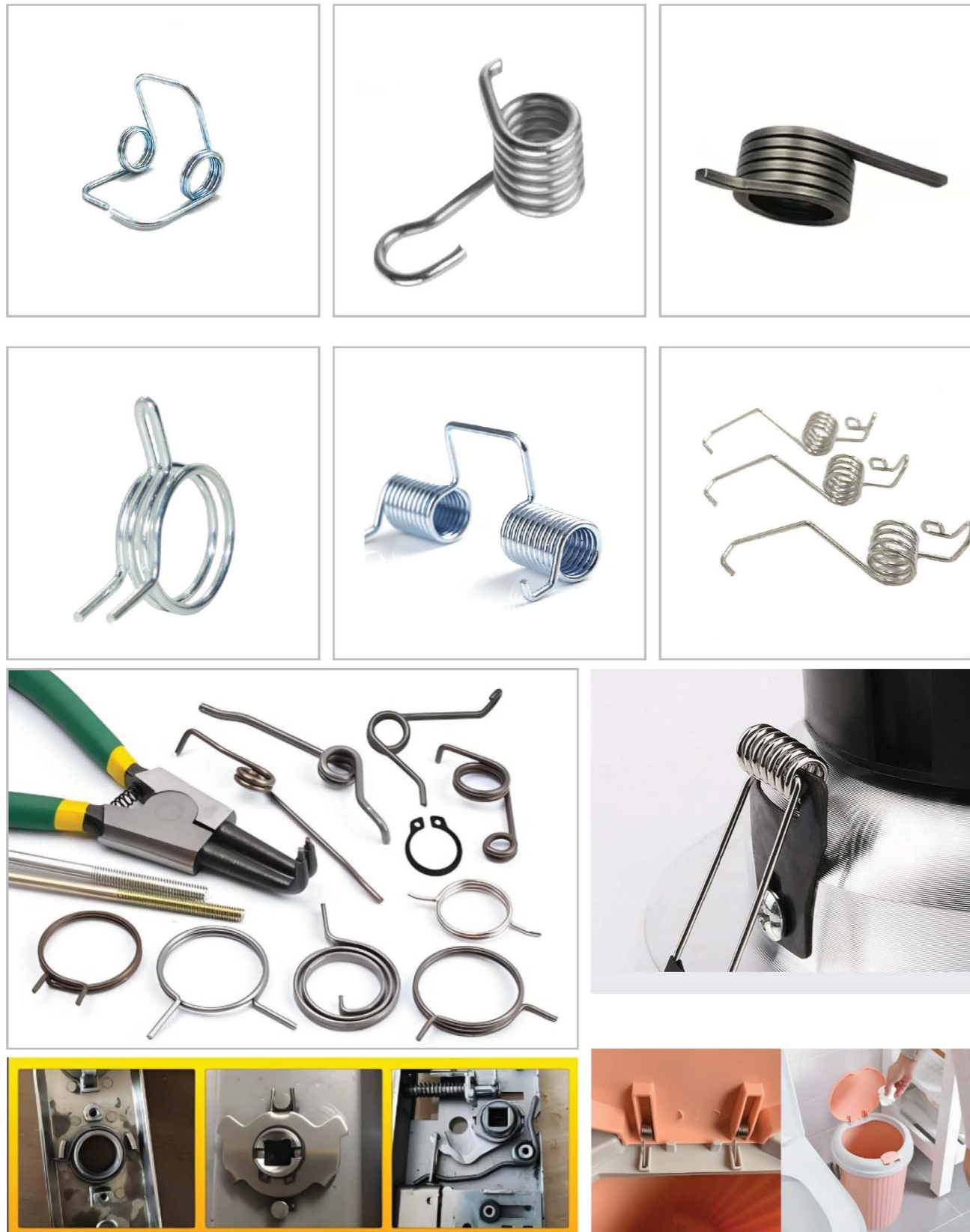
压簧 Compression Spring



拉簧 Extension Spring



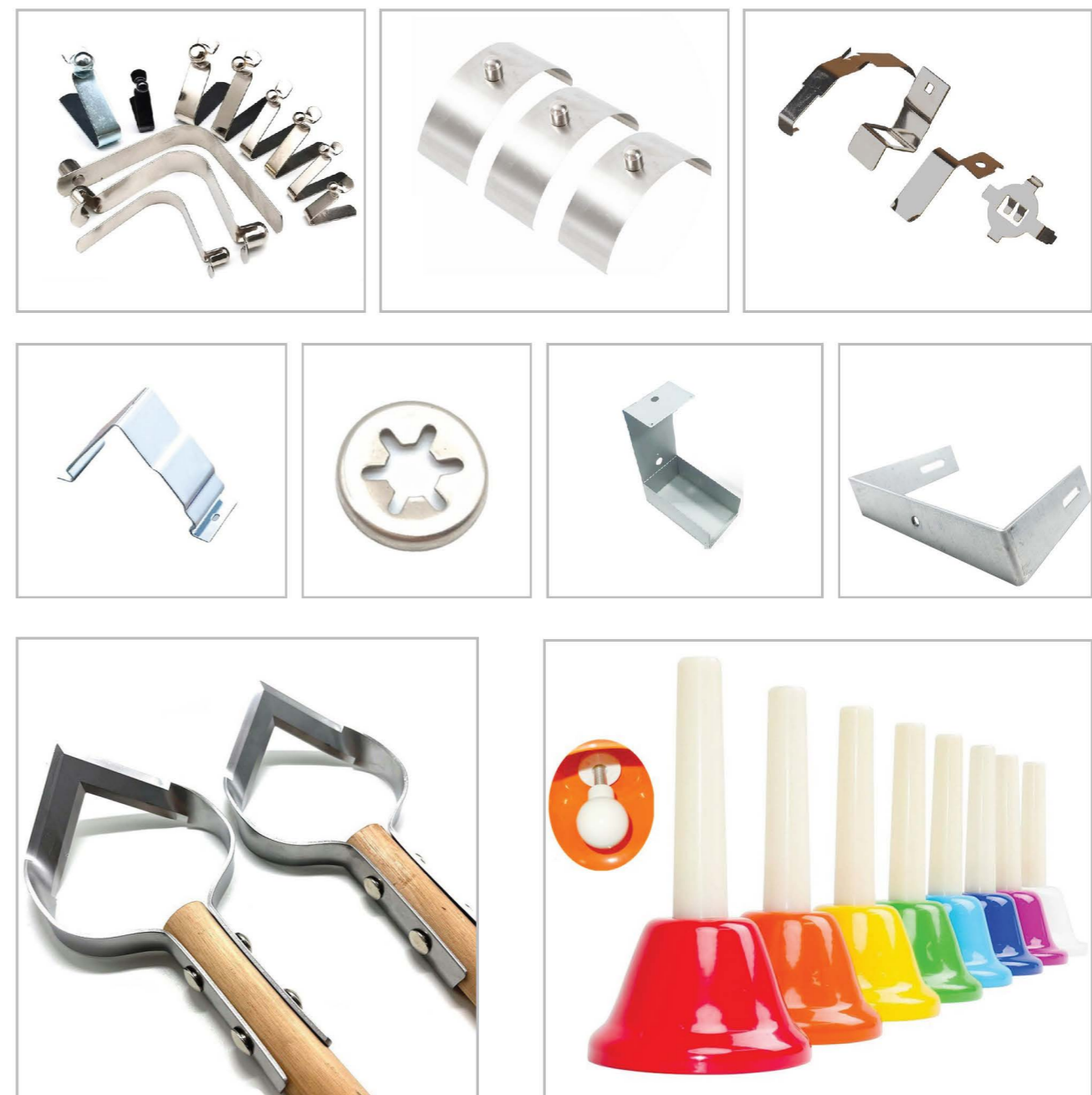
## 扭簧 Torsion Spring



## 冲压系列 Stamping Parts

冲压在五金加工里面用的最多，指的是利用冲床及模具将不锈钢、铁、铝等板材由压力机提供加工所需压力使其变形或断裂而形成指定形状和尺寸。包括冷/热冲压、挤压、滚压、焊接、切削等等，还包括其他一些工艺，应用也非常广泛。

Stamping is the most commonly used in hardware processing. It refers to the use of punch presses and dies to deform or break stainless steel, iron, aluminum and other materials into specified shapes and sizes by providing the required pressure on the press. It includes cold/hot stamping, extrusion, rolling, welding, cutting, etc., as well as some other processes, and is also widely used.



## 数控 CNC

数控车床、车削中心，是一种高精度、高效率的自动化加工车床。配备多工位刀塔或动力刀塔，具有广泛的加工工艺性能，可加工直线圆柱、斜线园柱、圆弧和各种螺纹、槽、蜗杆等复杂数控车件，具有直线插补、圆弧插补各种补偿功能，并在复杂零件的批量生产中发挥了良好的经济效果。

CNC lathe and turning center are high-precision and high-efficiency automated machining lathes. Equipped with multi station turret or power turret, it has a wide range of processing technology performance and can process complex CNC parts such as straight cylinder, oblique cylinder, arc, various threads, grooves, worm gears, etc. It has various compensation functions such as linear interpolation and arc interpolation, and has played a good economic role in the mass production of complex parts.



# Besoon

柏顺五金以匠心锤炼细节，精选材质，严控工艺，每一件产品都经得起时间与压力的考验。

